

DATES FOR YOUR DIARY

- now 'til 21 Oct: at StM & StN: Harvest of Talents Exhibition
- Sept 27: 3.30-6pm: TOA Open Evening: for more info & to attend, see flyer + QR code on p 11 of the electronic issue.
- 1 Oct, 6pm: Drawin' Dancing Event, StM&StN Church: an opportunity for artists, musicians and dancers to share creative expression in an evening of experimentation & discussion.
- Talk about John Smythe, by his son Eddy: at StM&StN: 8 Oct, 6pm. An account of bravery in war, service to the Colonial Office, work on HMT Empire Windrush, and as Solicitor General, then Attorney General of Sierra Leone
- Friday Oct 13: 7.30pm: A concert of song given by tenor John Findon & soprano Elizabeth Findon (professional singers currently with English National Opera), with the choir of St Andrew's, Sandford. With music by Gershwin, Korngold, Rogers & Hammerstein, Vaughan Williams, Taverne and Bizet. Tickets on the door. Refreshments available. (John is son of Littlemore's John Findon Sr, priest at St Andrew's Sandford.)
- Weds 18 Oct: 7 for 7.30pm at the Community Centre: Local History Society talk by Philip Salmon: *Henry Broadhurst, from Littlemore stonemason to Member of Parliament.*
- Sat 11 November: 7.30pm: Wantage Big Band at St Mary & St Nicholas Church. A relaxed evening of that glorious big band sound with tunes ranging from classics of the big band golden era, through Sinatra, Sammy Davis Jr, Matt Monro, Queen, Oasis, right up to Bubl   & Gordon Goodwin. Christian Bradley is the Big Band's singer: he's moonlighting from his regular gig as choirmaster at St Andrew's, Sandford. Tickets £12 (£10 concessions) available or on the door, or in advance from www.ticketsource.co.uk/wantage-big-band-littlemore. Booking is recommended. Refreshments.



Proceeds to Wantage Silver Band, a charity dedicated to encouraging music participation for all levels and ages.

- Weds 15 Nov: 7 for 7.30pm at the Community Centre: Local History Society talk by Jamie Williams: *Stanton Harcourt excavations, an overview*, (as seen on Digging for Britain).
- Sat 25 Nov: 11-2.30pm: St Mary & St Nicholas Church Bazaar in Church: with Christmas Stalls & Festive Food
- Sat 2 Dec, 12-3pm: Blessed Dominic Barberi RC Church Christmas Bazaar in the Church Hall. Stalls selling cakes, books, toys & gifts; plus bottle stall, tombola, refreshments & Grand Draw. All are welcome!
- Mon 25 Dec: 1-4pm: Community Christmas Day Lunch at John Henry Newman Academy, Grange Road. To book or to help contact: admin@littlemorechurch.org or 07398 599 430

CONSULTATION ABOUT ANTISOCIAL BEHAVIOUR HERE

Oxford City Council invites you to share your concerns and offer suggestions on how to improve public space in Littlemore to make it safer for everyone. They are starting with a focus on Little Park & Cowley Road Shops area, and on St Nicholas Road shop area & Alice Smith Square. Find a survey at <https://littlemorecommunitysafety.commonplace.is>. If you would like to raise concern about other public spaces in Littlemore, please email City Councillors Sandy Douglas, and/or Tiago Corais, at cllrdsdouglas@oxford.gov.uk / cllrccorais@oxford.gov.uk.

NEW TO THE LISTINGS (pages 7-13)

- **Knitting Group** Tues 11-1 at St Mary & St Nicholas Church.
- **Exercise group** organised by Age UK Oxfordshire: at the Community Centre: I've no additional info yet.
- **Drop in & meet our Age UK(Ox) Rep:** (last Mon each month at **SM+SN's** 10.30 -12 Monday Coffee.

OXFORD SUMMER SCHOOL...

of Art, Craft & Music had another successful week at The Oxford

Academy this year, with the Saturday set aside for one-day classes for those not available during the week or wanting a taster. To join our mail list see [oxfordsummerschool.com / contact](http://oxfordsummerschool.com/contact).

Anne Griffiths

LITTLEMORE RUGBY FOOTBALL CLUB ANNUAL FUN DAY

LRFC held its Annual Funday this August Bank Holiday weekend, and it was another fantastic success. The weather tried its best to stop proceedings but the sun came out in the afternoon and lots of fun was had by all. This year there were 5 great rides (go karts, climbing wall, mega sweeper, carousel and a bungee trampoline) on which the children could ride unlimited wearing a £6 wrist band. The Fire Brigade brought a



Centre: LRFC President Tim Stevens, Vice-chair John Perry, Deputy Lord Mayor James Fry, LRFC Chair Lee Gillett

fire engine along to let the kids have a play. There were stalls, great food on sale, and the Club Bar whose crew worked a 12 hour shift. To entertain the crowds the live music stage had local bands playing throughout the day. We were pleased to see our local MP Anneliese Dodds, and the deputy Lord Mayor, James Fry. It's not too early to make a note in your diary for next year Sunday 25 August 2024!

John Perry

MIGHT YOU PUT LITTLEMORE ON THE ARTWEEKS MAP?

We're running an *Interested in Taking Part* event at 7 on Mon 9 Oct. To receive a Zoom link, email Jo@artweeks.org. Register for ArtWeeks 2024 from Oct 1, at www.artweeks.org.

Jo Salmon, 01865 865 596

ST JOHN FISHER SCHOOL NEWS...

from their recent Ofsted report...

'Across the school, there is a calm and purposeful atmosphere.

Pupils are polite and friendly. Children in the Nursery settle quickly because there are clear routines. Pupils understand what makes a good friend. Relationships between staff and pupils are excellent. Pupils feel safe at school because they trust adults to look after them. Pupils learn to be active citizens. Pupils are taught the importance of being an 'up-stander' not a 'by-stander'. With support from the Trust, the school has recently reviewed the curriculum. Now all pupils are engaged, and are building on their previous learning in all subjects.'

OVERALL:

Quality of education: Good

Behaviour & attitudes: Good

Personal development: Good

Leadership & management: Good

Early years provision: Good

The school achieved this rating under its interim Head

Mrs Penman. It will move forward under the leadership of Mr Higgins. See: www.st-john-fisher.oxon.sch.uk/schoolnews . Ed



Work, Rest & Play © SJF permissions received

ANGELMEAD EXPLORER SCOUT UNIT NEWS

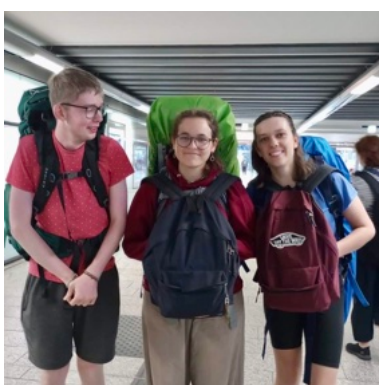
We went to Germany this summer. Most of the group explored German culture and history while a small group achieved their Explorer Belt by traveling from Dortmund to Berlin, completing challenges on the way with little funds. We gathered towards the end of the trip to meet local scouts: we made new friends whom we hope will visit Oxford soon.

We are always happy to welcome new members.

We meet Friday evenings.

For more information see:

www.oxfordspires.org.uk/groups-and-explorer-units/explorer-units/angelmead-explorer-scouts.



Camille Kalaja (photo permissions received)

ELECTRIC BLANKET TESTING

The next 'local' session is Monday 2 Oct 9am-1pm at Slade Fire Station. Last year 29% of blankets tested failed to meet safety standards, making them a fire risk. Folk who want a free test need to pre-book on 01865 895 999. (Space was still available at the time of going to print, Ed.)

Cheryl Harrison

NEWS 28TH OXFORD SCOUT GROUP

What a good summer we've had! *Thank you* for your support for our July Fayre. Whether you were a donor, a supporter, a volunteer, or just came to enjoy the day, you help us to do more for the young people in our group. Two other big events were: *Scout Summer Camp in Southampton, which included a visit to the Mary Rose, kayaking, & activities like cooking for your patrol every day, and *a week-long camp for our Cubs back in May: *thank you* to those who provided grants to make this happen. Coming up we have competitions, activities and more camps, and we can't wait to introduce more young people to scouting.

Ruth Lloyd, 07736 831 038 (Tictac)

LOCAL OPPORTUNITIES TO VOLUNTEER

- ☑ Car owners needed: St Mary & St Nicholas Church is amongst the local providers of day-time groups attended by elderly folk who are unable to leave home without transport to assist them. Age UK can offer advice about insurance, and training about how to help folk in & out of the car, fold wheelchairs, and so on. If you can help, please contact Rev Margreet Armitstead vicar@littlemorechurch.org or 01865 748 003.
- ☑ Car owners are needed every Wednesday morning to pick up food at Oxford Hub in Botley, and bring it to St M & St N church by noon for distribution to families attending groups there. Contact Rev Margreet as above.
- ☑ Little Chuggers: Stay & Play for 0-4s, & their families/carers: Friday mornings term time in Fairlie Road. If you can help please contact: Ruth Lloyd: littlechuggers@gmail.com .
- ☑ 2210 (Cowley) Sqn Air Force Cadets are a successful local youth group, looking for adult helpers. Call: 0345 600 6601 and/or see p 11 for flier.
- ☑ Help with bulb & wildflower seed planting on verges around St Nicholas Rd, 10am-2pm, Sat 7 Oct and/or Sat 4 Nov (see right): call 07901 543 624 if you have trouble finding us.
- ☑ Free on Christmas Day? To help with welcoming & serving Community Christmas Day Lunch, contact Eve McWilliam: admin@littlemorechurch.org

THOMPSON TERRACE ALLOTMENTS

Allotments provide the opportunity to cultivate high-quality produce, reduce your weekly food bill, improve your diet, and lower the carbon footprint associated with packaged & transported food. Our local Thomson Terrace site thrives due to its vibrant, multicultural & intergenerational community, which includes both novice & experienced growers. Guided by our Field Secretary, we organise monthly work-social events at the allotments, so plot holders can come together and share diverse gardening techniques & insights. We have a small number of 5-pole and 10 pole plots available. If you wish to apply for a plot, please see our website, www.ttacic.org or contact me at Secretary@ttacic.org .

Kathy O'Donnell

ON OUR DOORSTEP

- **Cowley:** BMW is to spend £600m in its factory in Cowley, to create a plant for electric Mini Cars.
- **A4074: HIF1 Project:** Oxfordshire County Council's planning committee has voted against the Housing Infrastructure Fund 1 Project which would provide a new road linking the A34 Milton Interchange with Clifton Hampden, and cause a serious increase of traffic up the A4074 through Nuneham Courtenay to the Heyford Hill Roundabout. (See LITTLEMORE LOCAL issue 445.) A government inquiry is set for December 5.
- **Blackbird Leys:** Plans to build hundreds of affordable homes, new retail spaces & new community facilities including a new community centre have been given the green light by the City Council planning committee. £1.2M has been set aside for a new Youth Hub. (For more about the hub see below.) Editor

PROPOSED NEW £1.2M YOUTH HUB IN BLACKBIRD LEYS

Oxford City Council (CC) has secured over £1.2M of funding in a partnership bid with Oxfordshire County Council (OCC) to redevelop an under-used part of the Leys Pools & Leisure Centre to provide a new space, and services to support young people in Oxford. CC & OCC worked with young people to help develop the plans for the new hub. The existing crèche facilities will be moved to another part of the leisure centre and the under-used soft play area converted to create space for a social area, quiet rooms, a kitchen, music and digital space and a climbing wall. The anticipated programme of youth work activities includes opportunities such as cooking, climbing, music, & technology, and is expected to evolve as the programme develops. The funding also provides for four youth workers and a co-ordinator for the first year. *Editor*

ENERGY EFFICIENCY GRANTS MAY SOON BE AVAILABLE

Look out for information from the City Council about the Home Upgrade Grant (HUG) and Energy Company Obligation (ECO) schemes.

Who might qualify?

- HUG2: low Energy Performance Certificate (D-G) households that do not use gas for heating, and are located in areas identified as the most deprived in the indices of multiple deprivation. This will include parts of Littlemore.
- Energy Company Obligation (ECO)
 - ECO4 eligibility is based on low EPC (D-G), and householders being in receipt of certain benefits.
 - There are additional categories: ECO flex which gives local authorities more flexibility in making awards and ECO plus which is based on low EPC (D-G) and council tax bands A-D.

Cllr Anna Railton

MIGHT YOU HELP?



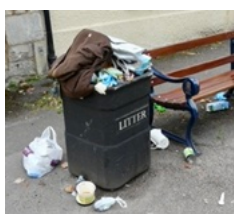
The Parish Council needs additional volunteers to help deliver the print issue of LITTLEMORE LOCAL to every home in Littlemore, 6 times a year. Your bundle of copies would be delivered to you. To learn more please contact me, Cllr Lynne Davies lynne.davies@littlemoreparishcouncil.gov.uk or leave a message for me, within office

hours, via the Clerk: 07377 682 216. *Cllr Lynne Davies*

LITTERING AND FLY-TIPPING

There's a sad recent increase in littering and fly-tipping especially in Sandford & Oxford Roads, where these photos were taken within 10 minutes of each other on Sept 17. The road verges between were scattered with paper & bottles. Putting household waste in street litter bins is classed as fly-tipping: the bin may be removed, which would make littering worse. If you notice a problem with a litter bin, report it on FixMyStreet www.fixmystreet.com, or share your concerns with Councillors Sandy Douglas 07901 543 624 (within office hours), Anna Railton anna.railton@littlemoreparishcouncil.gov.uk, or Tiago Corais, who holds a surgery at the Library: 3rd Friday each month from 11am-12:30pm.

Thank you to those residents who have equipped themselves with bags & litter pickers, and who are doing their bit to tidy up. *Editor*



NEWS FROM OUR CITY & COUNTY COUNCILLORS: Sept 2023

Sandy Douglas, Tiago Corais, Trish Elphinstone

Crime and Antisocial Behaviour (ASB)

- **Liaison with Police & ASB team:** we have regular meetings: our current focus is on the area around the Cowley Rd shops, Little Park & the bypass bridge. If you have concerns about ASB at Cowley Rd & St Nicholas shops / Giles Rd / Alice Smith Square please complete the survey mentioned on page 1.
- **CCTV:** We have managed to secure funding from the City ASB team for a trial of CCTV to be installed on the lamp-post on Cowley Rd opposite the entrance to Little Park. It should be able to pan back & forward and is likely to be in place for around 6 months. Dependent upon feedback, funding, & incidents recorded, permanent CCTV may be possible.
- **Lighting under Cowley Rd bridge:** We have obtained an estimate for installation of lights under Cowley Rd / bypass bridge. We are trying to identify funding sources & will be arguing that it should be viewed as a priority as there is an ASB issue and it's anomalous that it's not already lit.

Verges & biodiversity

- We are organising volunteer bulb and wildflower seed planting on verges around St Nicholas Rd, funded from our ward budgets. Please come along between 10am & 2pm on Sat 7 Oct and/or Sat 4 Nov, give Sandy Douglas a call on 07901 543 624 if you have any trouble finding us.
- We have heard many residents' views about the reduced grass cutting – we are feeding this back to the County council and will update residents if there is potential for a change for next year.

Road Safety and Highways

- We are having regular meetings with County Road Safety officers, focusing on: *the crossing at Sainsbury's entrance *other steps to improve pedestrian / cycle access to / from Mogridge Drive *Safety on Sandy Ln West, especially outside St John Fisher School *Newman Rd / Oxford Rd junction. *Cycle safety on Sandford Rd. Funding is complex & each of the above would require a substantial amount, but there are possible (though very uncertain) funding sources for each. Even if immediate funding is not possible we will be pushing for them to be listed for funding in future years.
- We also raised residents' request for a Zebra crossing at the Co-Op on Littlemore Rd. Highways staff think that the safety issues are more pressing at the locations listed above.
- We have recently written to Cllr Gant, the Lib Dem County Cabinet member for Highways, asking for the exemptions which will enabled by the ANPR on Littlemore Rd to be extended to blue badge holders and carers.

Little Park & Village Green

Working with Cllr Maggie Willis, and & with substantial & valuable help from Julia Brocklesby, Trish has been able to get confirmation that County did, as local people thought, transfer ownership of Little Park to LPC. She is continuing to work on clarifying the ownership of the 'Village Green'.

Oxford Rd Recreation Ground

We were approached by the local mothers who are pressing for investment in improved facilities in the park. We think it's great to have residents engaged in this way, and are hopeful that they will work collaboratively with the Parish Council who are already working on this: see p 19. By working together we may be able to secure the future of the park and also be able to bring (possibly modest) funding from City / County programmes to help in certain ways, for example the provision of exercise equipment.

Authors named above

LITTLEMORE HEALTH AND WELL-BEING SURVEY

It's not too late to fill in the questionnaire mentioned last time (see the poster below). Please find the survey at <https://www.surveymonkey.co.uk/r/> or click the QR code in the poster. The closing date is 31 October '23.



LITTLEMORE COMMUNITY PROFILE

OXFORD CITY COUNCIL AND OXFORDSHIRE COUNTY COUNCIL-PUBLIC HEALTH ARE WORKING ON A PROJECT TO FIND OUT MORE ABOUT HEALTH AND WELLBEING IN PLACES ACROSS THE COUNTY. ONE OF THE AREAS WHERE THE PROJECT IS TAKING PLACE IS LITTLEMORE AND WE ARE WORKING WITH LITTLEMORE COMMUNITY PARTNERS TO DO THIS.

HOW YOU CAN GET INVOLVED

- PLEASE VISIT THE LINK BELOW AND ANSWER THE ANONYMOUS SURVEY TO GIVE YOUR VIEWS
- SHARE THE LINK TO THE SURVEY WITH OTHER RESIDENTS
- COMMUNITY FIRST OXFORDSHIRE - A LOCAL CHARITY - WILL ALSO BE CONDUCTING IN PERSON INTERVIEWS AND FOCUS GROUPS. IF YOU WOULD LIKE TO SHARE YOUR VIEWS OR PARTICIPATE PLEASE CONTACT TOM BY EMAILING [INFO@COMMUNITYFIRSTOXON.ORG](mailto:info@communityfirstoxon.org) AND WE WILL BE IN TOUCH

PLEASE SCAN THE QR CODE BELOW



IF YOU REQUIRE A PRINTED COPY, REQUIRE ASSISTANCE TO RESPOND TO THE SURVEY, OR HAVE ANY QUESTIONS PLEASE CONTACT ABAILEY@OXFORD.GOV.UK



CONTRIBUTIONS TO LITTLEMORE LOCAL FROM THE COMMUNITY

The editor welcomes copy from members of the community, and would like more, but folk do need to say who it's from! I can't simply publish QR codes, partly because I have no way of opening them.

Editor

NEW BURIAL MEADOW ON SLOPES OF SHOTOVER HILL

Oxford City Council has agreed to progress with creating a new burial meadow on lower slopes of Shotover Hill. It will feature trees, wildflower meadows and paths linking to Shotover Woods, and will be large enough to accommodate about 45 years of burials, though the amount of space on site available for burials is subject to planning permission.

Editor

PLANS TO MAKE OXFORD A SMOKE CONTROL ZONE

There is now a strong body of evidence to show how air pollution affects health at lower concentrations than was previously understood. To protect the public from dangerous microscopic particles, people are prohibited from burning high-polluting fuels in Smoke Control Areas. Since 1958 when the Great Smog of London covered the capital for five days, Oxford has had 23 such areas, covering about 48% of the city. The new proposals will see the patchwork replaced with a single Smoke Control Area covering the whole of Oxford including Littlemore. To comply with a Smoke Control Area in England, residents & businesses should use an approved appliance or an authorised fuel type. For a list of these, see: <https://smokecontrol.defra.gov.uk/appliances.php>. Residents who can't use an approved appliance must use an authorised fuel. DEFRA lists authorised fuels on its website, too. If it concerns you, look out for the consultation which is scheduled for this autumn.

Cllr Anna Railton

VOLUNTEER DRIVERS URGENTLY NEEDED

The health and well-being of our elderly neighbours is supported by their being able to get out & about to social groups such as this in St Mary & St Nicholas Church.



Please consider using your car and your time to help them.

Contact me, Rev Margreet Armitstead for more information: vicar@littlemorechurch.org

For other opportunities to volunteer locally, see p 2. Ed



Pheasant feathers from the Thames Path: coloured pencil drawing: Editor

LITTLEMORE LOCAL HISTORY SOCIETY PAGE

Summer Village Walks and New Street names research

On Saturday 19 August, LLHS members, friends and families were welcomed by the Sisters at Newman College Littlemore to see and hear, in this beautiful building with its delightful courtyard garden, the remarkable history of John Henry Newman's work in Littlemore. The fine bust of JHN on a pedestal is a recent addition to the garden.



LLHS members and our host beside the new bust of John Henry Newman in the courtyard garden at Newman College

On Saturday 2 September LLHS members and friends were led on a walk around both Newman Place, a new very striking residential development, and the 'Oxford Expansion' of the California-based Lawrence J. Ellison Institute for Transformative Medicine, both off Armstrong Road. The walk was led by LLHS member Sue Stewart, who is also a Parish Councillor.



LLHS members led by Sue Stewart (first on the right) outside a short row of houses at Newman Place

To find street names for the housing development, Sue had researched the several Littlemore families. (Parish Councils are invited to make suggestions.)

Neill Place is named after the family name of Bill, Peggy and Mary, all nurses at the hospital for many years. Mary Parslow, neé Neill is delighted, especially to have a road named in honour of her father who was also a D-Day veteran.

Coombs Road is named after Dennis Coombs who was a plumber and engineer at the hospital and was well known around the village.

Daly Close is named after Dr Nicholas Daly, who worked at the hospital for many years with his wife Mavis and daughter Marie, both nurses. Marie Watkins neé Daly still lives in Littlemore and is happy for her name to be used in honour of her parents.

She has photographed the new road sign and sent it to family members, including some in Ireland. Her uncle was Cardinal Cahal Daly (1917 - 2009), former Roman Catholic Primate of All Ireland. He was a regular visitor to Littlemore and when here, he would call into Newman College causing much excitement.



Waiting for trees: new homes at Newman Place

Walters Street is named after Charlie Walters, originally from Sandford, who played cricket for the Asylum team. In the early 20th century, Littlemore Asylum had a strong cricket team, largely made up of staff: but it seems that some patients would also play for the team, which was probably why it only ever played home matches on a pitch in the hospital grounds.

Charlie Walters
© Getty Images



Charlie became one of the finest players for Oxfordshire, for whom he played from 1922 to 1952. He was also a professional footballer and played for Tottenham Hotspur when they won the FA Cup Final in 1921. That year, George Brown from Temple Cowley who had worked at the Asylum for years and who had also played for the Asylum, played 3 Test matches against Australia, so Littlemore was well represented on the national sporting stage in 1921!

The parish council put forward two more names with local links which were rejected as too similar to existing Oxford streets.

Padua Way (a twin town of Oxford) was not our choice and neither was Lavender Drive!



Ground works at the Ellison Institute site: they are creating a basement auditorium

Julia Brocklesby

with some info from Mike Stimpson's article about George Brown & Charlie Walters from issue 422 of LITTLEMORE LOCAL

Reconnecting Bernwood, Otmoor & The Ray.

The land stretching northeast of Shotover, between Oxford, Bicester and Aylesbury is one of the richest areas for wildlife in our region: it contains the ancient Bernwood forest, the Otmoor basin and the wildlife-rich meadows of the Upper Ray – all nationally-important sites. They are home to rare species like Bechstein's bats, great crested newts and curlew.

But these habitats are increasingly fragmented and threatened.

Following our consultation with farmers, councils, business owners and residents, we can confirm plans to connect the existing habitats to create a nature-rich 'green lung'.

We propose projects that can help us support nature, capture carbon, and benefit farmers and the rest of the local economy.

One project would connect an eight kilometre stretch of woodland north east of Oxford (including Brasenose Wood, Shotover Hill and Shabbington Woods) with new natural habitats and public Rights of Way.

Another would be to restore the floodplain meadows around the River Ray between Otmoor and the village of Marsh Gibbon east of Bicester, creating an inland wetland complex that could one day be on the scale of the Cambridgeshire Fens and the Somerset Levels. As well as providing new habitat for fish, wading birds, mammals and insects, these floodplain meadows could also significantly reduce the flood risk downstream by storing more water and slowing flows. They could enhance water quality in the Ray by blocking farm fertiliser run-off, and provide recreational opportunities for the public.

BBOWT and its partners also want to look into the feasibility of creating new publicly-accessible nature reserves.

Other ideas include restoring hedgerows and roadside verges for wildlife across the area and supporting a new group of 25 local farmers who are developing proposals to help wildlife, create habitats and support rural incomes.

To make these dreams a reality, the study identified numerous significant sources of funding which include the new Biodiversity Net Gain law and the new Environmental Land Management schemes.



These replace EU agricultural funding, and offer farmers and landowners money to do environmental works for the public good.



Find out more at bbowt.org.uk/reconnecting-bernwood-otmoor-and-ray

For more information contact:
Pete Hughes,
BBOWT Communications Officer,
Armstrong Road, Littlemore
07845 014524
petehughes@bbowt.org.uk



GO WILD IN HALF TERM WEEK

Don't miss the opportunity to raise funds for our wildlife charities on the Big Wild Walk in half term: 16-30 October

Set your own challenge to climb, run, swim, cycle, walk or roll, while fundraising to protect the wildlife you love. How far you go and where you take part is completely up to you.

Looking to take part as a family?

Our specially co-created Hedgehog Walk with Aardman, creators of Wallace and Gromit, Shaun the Sheep and Timmy Time, is designed with your little ones in mind. It has fun activity sheets to download to encourage them to get to the finishing line. For little legs and big adventures, we suggest a target distance of three kilometres in a week - the same distance a hedgehog travels each night. But you're welcome to set your own targets!



Sign up at
<https://www.wildlifetrusts.org/bigwildwalk>

Bernwood Meadows by Rhea Draguis
BOR Map
Bechstein's Bat by Chris Damant
Curlew by Robert Lewis

WHAT'S ON: GROUPS CLASSES ETC

Regular Events: OCT / NOV 2023

KEY: LOCATIONS IN and around LITTLEMORE

| | |
|--------------|---|
| ACF | Army Cadet Force Building, OX4 6LD |
| ATC | Air Cadet Forces Centre, OX4 6LD |
| BDB | Blessed Dominic Barberi Hall, OX4 4JX |
| EKH | Edith Kempson Community Hall, OX4 4QB |
| IBC | Indoor Bowls Club, OX4 6NA |
| JHN | John Henry Newman Academy, OX4 4LS |
| LCC | Littlemore Community Centre, OX4 4NL |
| RHCC | Rose Hill Community Centre |
| RBL | Royal British Legion Hall, OX4 4LZ |
| RMHC | Rose Hill Methodist Church: Rose Hill, OX4 4HS |
| SAC | St Andrew's Church: Sandford, OX4 4XZ |
| SHQ | Scout HQ, Fairlie Road, OX4 3SW |
| SVH | Sandford Village Hall, OX4 4YN |
| SM+SN | St Mary & St Nicholas Church, near OX4 4PB |
| TOA | The Oxford Academy, OX4 6JZ (except for Rugby Club which is via Northfield Close entrance: OX4 4NH) |
| VHL | The Village Hall, Littlemore, OX4 4PY |

- **Acrobatics, Parkour, Aerial & Stunts: UKCF Academy®:**
TOA: Parkour park, Tumble track & Stunts: ropes, trapezes, silks, hoops, handstand canes & more. Sundays: *10:30am -6pm: age 7-17 years *6-7pm: 18+ Pre-book only:
www.ukcfacademy.co.uk . Booking is also open for Christmas Holiday Workshops. Contact Oliver Ward 03302 233 995.
- **Advice Centre:** serving Rose Hill, Donnington, & Littlemore: see separate listing, p 19. **New:** Drop-in or Book Sessions at **SM+SN:** Fortnightly on Thursdays 10-11.30am. For dates or to pre-book call 01865 438 634.
- **Aerial Arts Academy: TOA:** Aerials & Pole Dance. Fun weekday & weekend dance & fitness classes for all abilities. Use code OAA1STFREE for your first class free when you book online at aerialartsacademy.co.uk . Contact: 07909 974 256, info@aerialartsacademy.co.uk: Nicola Ghalmi
- **Afternoon Tea at VHL:** Tea, coffee & delicious home-made cakes, and an opportunity to meet some of your Parish Councillors: first Saturday: 2.30-4.30pm (except August). Contact Claire Drinkwater 01865 718 580. See fliers p 13.
- **Age UK (Oxfordshire):** for support from Age UK (Oxfordshire) call 0345 450 1276, visit www.ageuk.org.uk/oxfordshire or email contactus@ageukoxfordshire.org.uk
 - **Drop in and meet our local Age UK(Ox) Rep:** at **SM+SN** Coffee Morning 10.30-12noon last Monday of month
 - **Strength & Balance Classes:** at **LCC:** with Valerie Hunt: I've no further information yet.
- **Art & Craft Courses:** Oxford Summer School @ **TOA:** yearly: see www.oxfordsummerschool.com
- **Art Exhibitions: SM&SN:** Regular events showing work of local artists. See: www.littlemorechurch.org/exhibitions. If you are interested in exhibiting your work please contact churchwarden@littlemorechurch.org . Current exhibition: Littlemore Harvest of Talents.

- **Air Cadets: ATC:** see www.aircadets.tv/2210. 2210 (Cowley) Sqn parade Mon & Wed from 7.30-9.30pm. Please send enquiries to me, Flt Lt O'Riordan, oc.2210@rafac.mod.gov.uk
- **Allotments:** * Thomson Terrace: to join the allotment waiting list, see our website www.ttacic.org , or email Kathleen O'Donnell Secretary@ttacic.org , or phone Field Secretary Tom Dyra 07867 931 487 *Minchery Farm (see City Council website) *Elder Stubbs (see City Council Website or Restore website) and *Denny Gardens (see www.odfaa.com/members/contact)
- **Angling Society: Extensive local still, & flowing waters:** permits available in all local tackle shops + via our website: www.littlemoreanglingsociety.co.uk . Contact Alan Campbell, 07789 334 710, alancampbell0811@gmail.com . Fixtures p 10.
- **Army Cadets: ACF:** If you're 12, in year 8, and are interested in learning news skills, & making news friends, the Army Cadets is for you. We parade on Thursday nights from 7.30 to 9.30pm. See www.armycadets.com/county/oxfordshire-acf/Oxfordshire for more information or contact Colour Serjeant S Turner, Detachment Commander 9882turne@armymail.mod
- **Baby Yoga & Post-natal Yoga: VHL:** Thurs 10.30am. Mama Flow Yoga: Sara Barker, Senior Yoga Teacher. For more info & to book see: <https://mamaflow.co.uk> . Concessions are available for low income families.
- **Bingo: RBL** on 1st & 3rd Friday, and **VHL** on 2nd & 4th Friday. If there's a 5th Friday, they will decide at the time. For more info contact Katie Tutty 01865 778 869 or littlemorerbl@gmail.com
- **Bowls (Indoor): IBC:** Sandy Lane West OX4 6NA: see www.oxbowls.co.uk
- **Childcare: Littlemore Preschool: LCC:** M-F 9-12noon: term-times: for pre-school children from 2-4 yrs: to go on our waiting list please drop by or contact us for an application form. Manager: Hayley Cox: phone 01865 396 449 when we are open, or littlemoreplaygroup@yahoo.co.uk
- **Childcare: Little People Nursery: TOA** Northfield Close entrance: 8am to 5.30pm, 48 weeks a year. Manager: Lindsey Hart: 01865 397 972, littlepeeplenursery@peeples.org.uk
- **Childcare: The Old Station Nursery:** Heatley Road, OX4 4GE: **Oxford Science Park:** open all year for children aged 3 months-5 years. Please contact Charlotte Dagg: 01865 777 167 or osp@tosn.co.uk
- **Children's Groups at JHN: term times only.** Stay & Play for 0-5s & parents/carers: Mon & Tues 9-10.15am. Join us for toys, a run around, & fun. No need to have a sibling at the school. For details call Hannah Jamieson on 01865 772 495
- **Children's Groups: Growing Minds**
 - **Growing Minds Project: OPEN:** if you live in Littlemore and have a little one born 2018 onwards, do get in touch to find out more about the Growing Minds project, and about receiving free books. Email families@peeples.org.uk or call Hayley Hayle on 07864 311 964
 - **Growing Minds Stay & Play at SM+SN church:** Thursdays 10-11.30am. For further information, please contact Lucy White: lucy@homestartoxford.org.uk or call 0773 438 9799
 - **Growing Minds Peep group:** at the **Peeples Cabins: TOA** Northfield Close entrance: Tuesdays 9.30-10.30, for all Littlemore parents/carers with babies under 12 months old. cont'd...

- For more information call Hayley Hayle on 07864 311 964, Hayley.hayle@peeple.org.uk
- **Growing Minds 1-2s Peep group: VHL:** Tuesdays 1.30-2.30pm: for Littlemore parents/carers & their children. For more information call or text Hayley Hayle on 07864 311964, hayley.hayle@peeple.org.uk
 - **Children's Groups: Peep Groups:** Please contact families@peeple.org.uk or phone Lisse Honeyman on 07780 716 098: see www.peeple.org.uk/peep-groups-oxfordshire
 - **Singing, stories, & time to talk to practitioners: various locations:** for babies, 1- & 2-yr-olds
 - **Children's Groups: Sing & Sign for 0-2 year olds & their parents/carers: VHL:** Mondays 10am & 11.15: learn baby signing the fun way in our fun-filled music classes. For more info, and to book see: www.singandsign.co.uk. Lead: Emily Percy
 - **Children's Groups: Stay & Play:**
 - **Little Chuggers: SHQ:** drop-in indoor & outdoor Stay & Play for children aged 0-4yrs, their parents & carers: find updates on our Facebook page. If you'd like to help: please contact Ruth Lloyd, 07736 831 038, littlechuggers@gmail.com
 - **Stay & Play at the Library** (see Library)
 - **Stay & Play at SM+SN** (see under Growing Minds)
 - **Stay & Play at JHN** (see under Children's Groups at JHN)
 - **Churches:** see separate Faith Group listing p 12
 - **Coffee morning and Sing-along: SM+SN:** Mondays 10.30-noon: drop in for coffee, cake, conversation & song: contact: contact Eve McWilliam admin@littlemorechurch.org
 - **Coffee morning: SM+SN:** Wednesdays 10.30-noon: drop in for coffee, cake, conversation: contact Eve McWilliam admin@littlemorechurch.org or see www.littlemorechurch.org
 - **Community Emergency Food Bank:** separate listing on p 15
 - **Conservation Work Parties:**
 - **Berks Bucks & Oxford Wildlife Trust. Based in Littlemore:** we have nature reserves which offer days out, and outdoor opportunities to volunteer. Contact: info@bbowt.org.uk or see www.bbowt.org.uk
 - **Oxford Preservation Trust:** Green space volunteering at **Heyford Meadow, Heyford Hill Lane**, 3rd Thurs every month, 9:30am-12:30pm. All welcome, no experience necessary, tools provided. Contact info@oxfordpreservation.org.uk or 01865 242918. For more opportunities see www.oxfordpreservation.org.uk
 - **Crafting for children + carers: Saturdays: see Library**
 - **Drop-In for people of all ages: RHMC:** Mondays 2-4.30pm Community Drop in: contact Liz Spain, Community Chaplain: rosehillcommunitychaplain@gmail.com
 - **First Aid for Parents & Carers: VHL:** Baby & Child classes that give you the confidence to deal with a medical emergency. Sessions cover CPR, Choking, Bleeding, Burns, Bumps, Breaks, Febrile seizures & Meningitis awareness. Next session: 2 Nov. To express interest contact Fran Brooman: fran@minifirstaid.co.uk, or 0796 722 8986. To book, see: watford.minifirstaid.co.uk

- **Football Coaching at TOA 3G Dome:** offered by Oxford United in the Community: for girls & boys age 5-11 years: Tuesday evenings: *5-6pm age 5-8 *6-7pm age 9-11: contact Alex Blane at community@oufc.co.uk
 - **Gardening Group: VHL:** The Village Hall gardening group meets Thurs 2-4pm, to maintain & improve the grounds of the Village Hall in Railway Lane. All welcome – no experience needed. If you'd like to join please send an advance email to Claire Drinkwater: c.drinkwater760@btinternet.com
 - **Gym: TOA:** weekdays 5pm-10pm, weekends 9am-9pm. We have Cardio machines (Treadmills, Cross trainers, rowing machines & bikes) free weights, & assisted weight machines. For more see: <https://toaleisure.schoolbookings.co.uk>. To arrange your £15 monthly membership: either pop in at reception during gym opening hours or contact us on toaleisure@theoxfordacademy.org
 - **Halls for Hire:** see separate listing p 11
 - **Karate:** Thursdays: at **JHN:** *age 4-6yrs Thursdays 3.30-4pm *age 7-14yrs Thursdays 4-5pm. Chris Wilmott, 07880 636 123 or chriswilmott2000@yahoo.com
 - *not confirmed this time: may not be accurate* **Kendo: TOA:** 2.30-4.30 Saturdays: Japanese samurai 'sword' fighting with bamboo shinai & wood bokken: for boys+girls, men+women age 4yrs to 60+: contact Rowena Dossett: Oxford City Kendo Club 07711 285 730, rowenadossett@aol.com, or see www.oxfordkendo.com
 - **Kickboxing:** Oxfordshire Freestyle Kickboxing Academy: **LCC:** *Tuesdays 6:30-8pm & *Fridays 6:30-8pm: for all ages and abilities. Contact Mal McKeon: 0771 345 9337
 - **Knitting Group: SM&SN: all levels, and other crafts welcome:** Tuesdays 11am-1pm. Contact: Eve McWilliam admin@littlemorechurch.org
 - **Lacrosse: TOA:** Mondays: *Juniors 6:30-7:30pm *Seniors 7:30-9:00pm. All welcome - no experience needed - trial session free! More info from: Annabel Campbell: OxfordCityLacrosse@hotmail.com. Follow us on Instagram [#OxfordCityLacrosse](https://www.instagram.com/OxfordCityLacrosse) or FB OXLAX
 - **Library: Home Library Service: Home Pick Up & Delivery.** Contact Kevin Salway, 01865 810 259: homelibraryservice@oxfordshire.gov.uk
 - **Library: Littlemore Public Library: TOA:** Monday 2-5pm | Tuesday 2-5pm | Thursday 9.30am-5pm | Friday and Saturday 9.30am-12.30pm. Contact Sharon Ingram: 01865 714 309, littlemore.library@oxfordshire.gov.uk
- Regular free events at the Library:**
- **Book Group for adults:** monthly: 1st Monday 2pm: read a suggested book and discuss it with the group
 - **Teen Time:** After school Club: Mondays 3.30-4.30: craft and create with friends
 - **Stay & Play for Under 5s & their carers:** Tues 2-4pm & Thurs 10am-12 noon
 - **Councillor Surgery:** 3rd Friday each month 11am-12:30pm. A chance to speak to a local City and Parish councillor (Tiago Corais) about your concerns.
 - **Friendly Friday Social event for adults:** refreshments, games, crafting, chat: weekly: Friday 10.30am-12noon
 - **Saturday Craft: for children & carers:** weekly 9.30-12noon: come and do simple crafts with your children

- **Littlemore Local History Society: LCC:** 3rd Wednesday 7 for 7.30pm. See front page for detail of upcoming meetings. Contact Buffy McClelland, history.littlemore@gmail.com, follow us www.facebook.com/groups or see littlemorelocalhistorysociety.wordpress.com
- **Menopause support: ONLINE and in person:** with Nina Galley qualified nutritionist & coach. Contact nina@nourishingspace.co.uk
- **Men's Breakfast: SM+SN:** monthly: 2nd Sat (except August) 9-10am. A space for men to meet, chat and enjoy a full English! Suggested donation £5. Booking required, please email Julian Armitstead: churchwarden@littlemorechurch.org
- **Music: Community Orchestra: TOA:** Weds 7-9pm term times. New members always welcome - no auditions, we just play for fun! See www.cowleyorchestra.weebly.com
- **Music: Concerts at SM+SN:** occasional concerts: for next one, see front page and flyer on p12. To stage a concert contact: Eve McWilliam: admin@littlemorechurch.org
- **Music: Jubilee Brass:** If you are a brass player and would like to come along to a friendly brass band, all players are welcome. We rehearse Monday/Friday evenings at Grace Church Cowley, OX4 2ES. Please contact Cliff Sadler: jubileebrassoxford@gmail.com for details
- **Music: Jubilate Band: SM+SN:** plays in the monthly Jubilate Church Service for SM+SN church: contact Malcolm Atkins malcolm.atkins1@ntlworld.com or Rev Margreet Armitstead vicar@littlemorechurch.org.
- **Music: Oxford Village Band: VHL:** Weds 8-9.30pm termly. For over 18s only: Traditional Folk Music in Harmony in the style of English village bands of Thomas Hardy's time. Suitable for most squeeze-box, woodwind, brass, fiddle, viola, cello & double bass players. Contact Dave Townsend: dtmellstock@aol.com or 01865 714 778
- **Music: Piano Lessons, & Music Theory: Littlemore:** tuition for students of any age or stage: Robin Hagues, 01865 770 894, robin@robinhagues.co.uk (enhanced DBS available for inspection)
- **Neighbourhood Watch:** you can start a Neighbourhood Watch scheme easily: see www.ourwatch.org.uk. Please email Maggie Lewis onw.enquiries@gmail.com for queries and registration forms.
- **Ozone Centre: Grenoble Road OX4 4XP**
 - **City Mazes:** Escape rooms for teens and adults : + new upside down escape room: 01865 920 900, <https://citymazes.com/location-oxford>
 - **Gravitee Golf: Miniature golf course:** 01865 952 646, www.graviteegolf.com
 - **Hollywood Bowl,** Bowling Alley & entertainment centre: 0844 477 0493 www.hollywoodbowl.co.uk/oxford
 - **Laser Kombat,** Children's Amusement Centre: 01865 788 380 <https://laserkombat.co.uk/oxford>
 - **Partyman World Of Play,** Children's Amusement Centre: with dedicated sessions for those with special educational needs, and with autism (*see flyer p 14): 01865 788 380 www.partymanworld.co.uk/location/oxford.
 - **Vue Cinema Oxford:** Multiplex cinema with latest films: 0345 308 4620, www.myvue.com/cinema/oxford/whats-on

- **Various eateries: dine in and take-away:** see www.thekassamstadium.com/the-kassam-leisure-complex
- **Bray Associates Sunday Boot Fair:** <https://bray-markets.com/bray-markets-kassam-stadium-ox4-4xp-antiques-bric-a-brac-and-boot-fair>
- **Pilates: Littlemore & Iffley:** physiotherapy-led classes & individual sessions. Three class formats now offered: face to face, live online via Zoom & a pre-recorded class (available for repeat use). For more info see: www.clevermovement.co.uk. Contact Jane Callaway: janecallawaypilates@hotmail.co.uk
- **Pop-Up Pilates (Physiotherapist-led) at VHL: Weds at *5.30pm & at *6.30pm:** Online sessions also available: contact Lauren McLeod 07731 321 991, info@pop-up-pilates.com or see www.pop-up-pilates.com
- **Pregnancy Yoga: VHL:** Mondays at 7.30pm. Mama Flow Yoga: Sara Barker, Senior Yoga Teacher. For more info & to book see: <https://mamaflow.co.uk>. Concessions are available for low income families.
- **Reading Group for adults: see Library**
- **Restore Shop & Café** at Littlemore Hospital: Coffee and snacks TTO. For updates see: facebook.com/oxrestore or twitter.com/oxrestore. Contact: Amy McCauley 01865 902 098, or littlemorecoverygroup@restore.org.uk. To volunteer there, see www.restore.org.uk/restore/volunteer and/or email volunteer@restore.org.uk
- **Rhythmic Gymnastics Club:** for girls from the age of 4 years: **TOA:** *Tuesdays 5-6pm, 6-7pm | Fridays 5-6pm, 6-7pm | Saturday 9-10am, 10-11am: contact Zuzana Gergelova info@oxfordgymnastics.co.uk, www.oxfordgymnastics.co.uk
- **Royal British Legion Club: RBL:** for contact details see Bingo
- **Rugby Training (Littlemore Rugby Club Senior): TOA:** **Northfield Close entrance: OX4 4NH:** Tuesdays & Thursdays 7 -8pm (Thurs only, 7-9pm Oct-March). Info updated daily @ fb: [RFC-Littlemore Rugby Club](https://www.facebook.com/RFC-Littlemore-Rugby-Club), contact David Lammin: 07341 841 821, info@littlemorerfc.org. Find fixtures listed below
- **Rugby Training Littlemore Rugby Club Mini & Junior: 5-12 yrs,** all abilities welcome): **TOA: Northfield Close entrance: OX4 4NH:** training Sundays at 10am. Please contact John Perry 07766 954 922 or minis@littlemorerfc.org for more information.
- **School Uniform Swap Shop: TOA:** Term time: Mondays after school. To donate a preloved uniform please bring it to Reception in a labelled bag. To sponsor a new one, contact Rev'd Kay Blackwell kay.blackwell@theoxfordacademy.org
- **Scriptural Reasoning Group: SM&SN:** monthly, Mondays 7-8pm: for dates see: www.littlemorechurch.org/scriptural-reasoning.html. Meet people of other faiths and explore scriptures together. If you'd like to come please email oxford@dialoguesociety.org
- **Singing: St Andrew's Church Choir: SAC:** We're always happy to accept new members. Choir Practice is 7.30pm Wednesday evening. There's no need to be a regular church goer: contact Christian Bradley cwwbradley@gmail.com
- **Social Groups: see:** Afternoon tea at VHL, Coffee morning +sing-along, Coffee Morning, Women's Institute, the Library listings, Drop-In, and Knitting Group

- **Women's Institute: SVH:** meets at 7.30pm on 2nd Thursday in each month usually in Sandford Village Hall. Contact: Jill Love 01865 716 557, jpappslove@hotmail.com or Carole Tasker caroletasker27@gmail.com or 01865 748 300 / 07876 701 151, or message our Fb page Sandford-on-Thames Women's Institute. (Forthcoming meetings listed below)
- **Woodturners Club: at VHL:** Club nights are second Thursday each month except December (club AGM): 7pm start. Newcomers are very welcome, no matter what level of experience: entry is free for your first 2 sessions. Contact owc_secretary@yahoo.com for more information or see www.oxonwoodturners.com
- **Yoga:** see Baby Yoga, and Pregnancy Yoga above.
- **Young people:** Education, Employment and Training support plus Activities & Info, visit: www.oxme.info
- **Youth Groups:**
 - **Air Cadets, and Army Cadets:** see under 'A' above
 - **Beavers (age 6-8): Cubs (age 8-10½) and Scouts (age 10½-14):** see their individual websites for details
 - **Brownies (1st Littlemore, for girls 7-10 yrs): VHL:** there are plans to start a group in Littlemore: for info contact Wendy Lumley: brownieslittlemorewendy@gmail.com
 - **Explorers (age 14-18): SHQ:** Fridays, 7-8.30pm: see: www.oxfordspires.org.uk. Just turn up, or contact group leader Shane Clark shane@teemclark.org.uk or Camille Kalaja camille.scout.kalaja@gmail.com
- **Youth Ambition:** Manager: Leonard Sackley. Contact 01865 335 884 YouthAmbition@oxford.gov.uk.
 - **Littlemore Youth Club: LCC:** Thursdays 4-6pm: term-times: free: open to young people aged 11-19. Come chill, have fun and enjoy activities, trips, games, cooking, gaming, arts & craft, music and more!
 - Local young people are welcome to attend **other nearby Youth Clubs and Sports sessions** listed on the Youth Ambition webpage and on their fb site
- **Zumba: TOA:** Mondays 7-8pm. Instructor since 2011, my classes are high energy, good fun and burn over 500 calories! All ages (14+) and abilities welcome. Pre-booking required via: www.zumba-Steffi.co.uk or email me steffihalldance@gmail.com
- **Zumba: LCC:** *Mondays 6:30-7:30 pm Zumba & Toning (with weights) and Thursdays 6:30pm-7:30 pm Zumba. Suitable for all fitness levels. £6 per class (concession if attending multi classes in month). Contact: Pat Meade 07957 491 868 or patsimeade63@gmail.com

PLEASE FIND THE FOLLOWING LISTINGS BELOW:

- Community Groups for Residents to join
- Trades and Businesses
- Halls for Hire
- Faith Groups
- St Mary & St Nicholas Church events & news

| LITTLEMORE ANGLING SOCIETY FIXTURES | | | | |
|-------------------------------------|-------------------|----------------------|---------------------|----------------|
| | Fixture | Competition | Venue | Draw : Fish |
| October | | | | |
| 1 | Club Angler | Aggregate Cup | Green Farm Ferry | D 8 : F 10-3 |
| 15 | S H Taylor Cup | Winter League/Points | Sandford | D 7.30 : F 9-3 |
| 22 | APC Challenge Cup | Prior Cup | Meadowlands | D 8 : F 10-3 |
| November | | | | |
| 12 | Chairman's Cup | Winter League/Points | Sandford | D 7.30 : F 9-2 |
| 26 | M Whipp Cup | Prior Cup | Alders Farm (Pines) | D 8 : F 10-3 |
| December | | | | |
| 10 | Chandlers Cup | Prior Cup | Manor Farm (Middle) | D 8 : F 10-3 |
| 17 | Christmas Shield | Winter League/Points | Sandford | D 7.30 : F 9-2 |
| January | | | | |
| 14 | K Mills Cup | Winter League/Points | Lakeview | D 8 : F 10-3 |
| 21 | S Denny Shield | Winter League/Points | Green Farm Fishery | D 8 : F 10-3 |
| February | | | | |
| 11 | Blind Pairs | Prior Cup | Holme Grange | D 8 : F 10-3 |
| 25 | R C Smith Cup | Winter League/Points | Sandford | D 7.30 : F 9-2 |
| March | | | | |
| 10 | Canal Cup | Prior Cup | Oxford Canal (tbc) | D 7.30 : F 9-2 |
| Alan Cambell | | | | |

| | | | |
|--|-----------------------|---|--|
|  | | | LITTLEMORE RUGBY FOOTBALL CLUB REMAINING 2023 FIXTURES COUNTIES 4 TRIBUTE BERKS BUCKS & OXON NORTH |
| Keep up to date @ fb: Littlemore RFC-Littlemore Rugby Club | | | |
| 30 September | Gosford All Blacks II | A | |
| 21 October | Didcot II | H | |
| 11 November | Grove II | H | |
| 2 December | Chinnor IV | A | |
| 16 December | Bicester II | H | |
| 6 January | Gosford All Blacks II | H | |
| 13 January | Didcot II | A | |
| 3 February | Grove II | A | |
| 17 February | Chinnor IV | H | |
| 2 March | Bicester II | A | |
| 16 March | Harwell | H | |
| Do come & watch home matches: we're at The Oxford Academy: (Northfield Close Entrance). Our clubhouse has a fully licensed bar with live sports on our big screen. <i>John Perry & David Lammin</i> | | | |

| | |
|--|--|
| Sandford-On-Thames Women's Institute: 2023 Meetings are held in Sandford Village Hall at 7:30pm on the second Thursday of the month. You don't need to live here to join us! | |
| Oct | 10 Craft Evening: preparations for Making tree decorations for Cowley Festival & Sandford Church |
| Nov | 9 Ventriloquist, & continue tree decorations 11 Wantage Big Band Concert in Littlemore Church plus a night at Dog Racing, with dinner (tbc) |
| Dec | 14 Members' Christmas Celebration (tbc) |
| Contact: me 01865 716 557, jpappslove@hotmail.com , or message fb: Sandford-on-Thames Women's Institute. Jill Love | |

COMMUNITY GROUPS open to residents to join

- **Littlemore Partners:** a Network of representatives from various local organisations, supported by interested members of the community. Its aim is to improve communication between residents and service providers, and campaign for improved services. Chair: Katie Scream, JHN Academy. If you would like to know more, contact:

finance@jhnacademy.co.uk

The Health & Wellbeing sub group. If you are interested in joining please contact the Chair: Rev Margreet Armitstead: vicar@littlemorechurch.org

- **Littlemore Community Association:** runs the Community Centre. Membership of the Association is open to Littlemore residents. Its Trustees include Cllr Dorian Hancock: dorianhancock@littlemoreparishcouncil.gov.uk
- **The Trustees of the Village Hall:** run the Village Hall which provides buildings, facilities and open space for Littlemore residents to use. They welcome new help: their Chair is Claire Drinkwater: c.drinkwater760@btinternet.com
- **A Littlemore Community:** a group of residents with an interest in planning. They are currently working with the Parish Council on the Neighbourhood Plan: they are keen to attract new members for short term projects this Autumn. Chair of NP group: Tony Eade: tony@edperspectives.org.uk
- **Littlemore Parish Council:** there are now no vacancies for Parish Councillors, but residents are welcome to join LPC Working Groups. Find all contact details on p 16.
- **Littlemore Residents Association:** a new group advertised on local social media and through leaflet drops. They aim to enable residents to voice concerns, and do their best to ensure that Littlemore is not forgotten in the various funding rounds. Chair: Lorraine Whipp. If you'd like to know more contact littlemoreres@yahoo.com

LITTLEMORE TRADES & BUSINESSES

- **Explore Learning Oxford:** Maths & English tuition for 4-14 year olds: upstairs at Sainsbury's. Contact: Paul Drake & Kate George, 01865 595 509. See: explorellearning.co.uk/oxford
- **ProPest Oxford LTD Pest Control.** We deal with Wasps, Moles, Rats, Mice, Cockroaches, Fleas & all Stored Product Insects. Licensed, insured, experienced & accredited by NPTA. Call Pete White 01865 579 366
- **Kay Valentin: Reiki Healing Practitioner / Master.** 1:1 In person or Online Healing. For more info, bookings, or consultation please contact me on 07851 396 622.
- **Westlake Heating & Plumbing:** Mike Westlake, telephone 07588 865 868. Gas Safe Registration No: 597859.

HALLS FOR HIRE

- **The Newman Meeting Place:** various flexible spaces including a kitchen able to cater for 100: suitable for meetings, conferences, exhibitions, groups, concerts etc: at St Mary & St Nicholas Church, Sandford Road, near OX4 4PB. See www.littlemorechurch.org/venue-hire.html. Contact Julian Armitstead: churchwarden@littlemorechurch.org

continued on next page



Wednesday 27th September

Open Evening 3:30 - 6:00pm

Commitment to Others, Commitment to Learning

Our culture will make a profound and positive difference to everyone at our school, enabling all to flourish. We meet the needs of all - whatever it takes.



We are also offering two open mornings on Thursday 28th and Friday 29th September, 9-11:00am, which require booking. If you would like to attend either morning, please complete the google form, using the following QR code to confirm your attendance. Thank you.



The Oxford Academy, Sandy Lane West, Littlemore, Oxford, OX4 6LZ
Tel: 01865 774 311 Email: enquiries@theoxfordacademy.org

**Royal Air Force Air Cadets**

**@aircadets**





JOIN US...

RAF Air Cadets recruiting now!

If you love aircraft, action and adventure, then the RAF Air Cadets is for you.

If aged 20 or over

INSPIRE THE NEXT GENERATION

Become an adult instructor with the RAF Cadets. Training is provided. Have fun, make life-long friends and even achieve valuable qualifications.

Help cadets develop leadership and team working skills. We have a wide range of civilian and uniformed roles available.

You could even find yourself out on the hills, adventure training, canoeing and visiting airfields.

The RAF Air Cadets comprises both the Air Training Corps and the Combined Cadet Force (RAF) at 960 community-based units and 230 schools, respectively, across the UK and overseas.

Call: 0345 600 6601
or visit www.raf.mod.uk/aircadets
2210 (Cowley) Sq
Sandy Lane West, OX4 6LD; www.aircadets.tv/2210



- **The Oxford Academy:** Beecroft Theatre, Bistro Hall, Events Rooms, Sports Hall, 3G Full size floodlit pitch, 3G Dome, Astro turf pitches, Grass pitches, Dance Studio, Fitness Suite, Drama studio and Classrooms: at TOA, Sandy Lane West, Littlemore, OX4 6JZ.

See: <https://toaleisure.schoolbookings.co.uk>

Contact TOA Leisure: 01865 783 238 or toaleisure@theoxfordacademy.org

- **The Royal British Legion Littlemore:** Functions rooms, Games room with snooker tables, darts boards and Bar:

at Lakefield Road, Littlemore, OX4 4LZ.

Contact Katie Tutty 01865 778 869 or littlemorerbl@gmail.com

- **The Village Hall, Littlemore:** Hall with wifi, kitchen, stage & garden: at Railway Lane, Littlemore, OX4 4PY.

Available to hire for organised classes, meetings, worship, & family gatherings.

See: www.littlemorevillagehall.org.

Contact: littlemorevillagehall@gmail.com

FAITH GROUPS

- **Blessed Dominic Barberi Roman Catholic Church**, Cowley Road, OX4 4JX. See: www.bldominicbarberioxford.org.uk

- **Coptic Orthodox Church:** We meet on the first Saturday of each month for the holy liturgy, followed by breakfast, at Saint Mary & Saint Nicholas, Littlemore. Everyone is welcome. <https://www.facebook.com/CopticOrthodoxChurchOxford>

- **Emmanuel Church: Littlemore Connect Group:** We meet weekly on Weds evenings at various locations in Littlemore, for Bible study, prayer, & fellowship. Everyone is welcome. Contact Ben Kelsey: benjaminkelsey@aol.com. For more @ Emmanuel Church see: www.emmanueloxford.org

- **God and People Centre (GAPC):** % Community Centre, Giles Road, OX4 4PL.

- **Littlemore Baptist Church:** Edith Kempson House, Chapel Lane, Littlemore, OX4 4QB: www.littlemorebaptist.org.uk. Sunday services: 10:30am-12noon. Contact: Andrew Bevan: andrew.bevan@littlemorebaptist.org.uk, 01865 514374 or 07799 532 177.

- **New Life Church:** Sunday services in Nepali, at VHL: see: www.nccuk.org/site/church/new-life-church

- **Rose Hill Methodist Church:** Rose Hill. OX4 4HS. Website <https://rosehillmethodists.org.uk>. Sunday worship is at 10.30am. Community Drop in for people of all ages: Mondays 2-4.30pm: contact Liz Spain, Community Chaplain: rosehillcommunitychaplain@gmail.com

- **St Mary and St Nicholas C of E Church**, Sandford Road, near OX4 4PB: website: www.littlemorechurch.org. Vicar: Rev Margreet Armitstead vicar@littlemorechurch.org. General enquiries: admin@littlemorechurch.org. Find St Mary & St Nicholas regular events, and special events on the next page.

VOLUNTEER AT ST MARY & ST NICHOLAS CHURCH

- ☒ Food collection for Growing Minds stay & play group: each Wednesday morning food needs to be collected from the Oxford Hub in Botley, and brought to the church kitchen before midday, to be bagged up for families attending stay & play. If you can help, even only once a month, please let us know. Please contact Rev Margreet Armitstead vicar@littlemorechurch.org or 01865 748 003.

- ☒ St Mary & St Nicholas Church is amongst the local providers of day-time groups attended by elderly folk who are unable to leave home without transport to assist them. If you are a car owner and would like to help, Age UK can offer advice about insurance, and training about how to fold wheelchairs, and so on. Please contact Rev Margreet Armitstead vicar@littlemorechurch.org or 01865 748 003.

WANTAGE BIG BAND

at St Mary & St Nicholas Church
7.30pm Saturday November 11

Join us for a relaxed evening
with our singer - 'local boy'
Christian Bradley -
for tunes from ...

The Big Band golden era
Sinatra
Sammy Davis Jnr
Matt Monro
Stevie Wonder
Oasis
Michael Bublé and
Gordon Goodwin



BOOKING IS RECOMMENDED

tickets £12 (£10 concessions) from
www.ticketsource.co.uk/wantage-big-band-littlemore



Rose Hill & Donnington
Advice Centre

LITTLEMORE SESSIONS

FORTNIGHTLY ON
THURSDAYS

FROM 10-11.30AM

AT ST MARY & ST NICHOLAS CHURCH

For more information or to book
a session call 0800 170 0156



ABOUT THE LISTINGS PAGES

If you know of anything that is going on in Littlemore, or of any Littlemore-based trade or business which you think should be listed, please let me know at:
editor@littlemoreparishcouncil.gov.uk

There is no charge for listings.

All I ask is that people confirm their information every two months.

I send a couple of reminders!

REGULAR EVENTS AT ST MARY & ST NICHOLAS CHURCH

❖ THE WEEK at the Church

Mondays:

- Coffee & Singalong: 10.30-12noon
- Scripture Reasoning: 7-8pm monthly: meet people of other faiths & explore scriptures together. To come please email oxford@dialoguesociety.org

Tuesdays

- Silent Prayer in the church at 8am
- Morning Prayer at 8.30am
- Knitting Group (other crafts welcome!) 11-1pm

Wednesdays

- Church coffee morning for all, 10.30am-12noon

Thursdays

- Morning Prayer in the church at 8.30am
- Growing Minds stay & play group, 10-11.30am for Littlemore residents & their pre-school children. With a pre-school clothing swap. Food parcels are available.
- Littlemore Friendship Group, 2nd Thursday each month at 10am in church.

Fridays

- Silent Prayer: 7am: Zoom Meeting: ID: 891 8819 9518, Passcode: Prayer

Saturdays

- Men's Breakfast 9-10am: 2nd Saturday each month: a full English Breakfast & time to talk. Suggested donation is only £5: if you'd like to come please contact Julian Armitstead churchwarden@littlemorechurch.org

Sundays

- Eucharist Service at 10am in church or Zoom (Meeting ID: 853 9014 0153, Passcode: Eucharist)

❖ ARTS EVENTS: see: www.littlemorechurch.org/the-arts

- **Concerts:** see front page, our noticeboard and our website. If you wish to hold a concert in our church please contact vicar@littlemorechurch.org
- **Exhibitions:** We regularly hold exhibitions of local artists' work. If you would like to exhibit your work please contact churchwarden@littlemorechurch.org
- **Harvest of Talents:** a yearly event
- **Jubilate Band:** this informal group plays in the monthly Jubilate Church Service: to join, contact Malcolm Atkins malcolm.atkins1@ntlworld.com or Rev Margreet Armitstead vicar@littlemorechurch.org

❖ BAPTISMS, WEDDINGS & FUNERALS

We are also available for Baptisms, Weddings & Funerals. Please contact Rev Margreet Armitstead vicar@littlemorechurch.org or phone 01865 748 003.

SPECIAL EVENTS AT ST MARY & ST NICHOLAS CHURCH

- Harvest of Talents exhibition, until 21 October
- Drawin' Dancing Event - 1st Oct, 6pm: part of the Harvest of Talents: an opportunity for artists, musicians and dancers to share creative expression in an evening of experimentation & discussion
- Blessing of Animals Service, 5 Oct, 4-5.30pm: bring your pets along for a blessing of health & wellbeing
- Talk about John Smythe, by his son Eddy: 8 Oct, 6pm. An account of bravery in war, service to the Colonial Office, work on HMT Empire Windrush and then as Solicitor General and Attorney General of Sierra Leone
- Memorial service, 6pm, 5 November: an opportunity to remember loved ones who are no longer with us by lighting a candle in their memory.
- Wantage Big Band Concert, 7.30pm, 11 Nov.
- Remembrance Service, 12 November, 10am
- Christmas Bazaar, 25 Nov, 11-2.30pm: Christmas Stalls and Festive Food!

Sing and Sign
helping babies communicate before speech

What is your baby trying to tell you?

Babes Babies Toddlers

Learn baby signing with us!

- ✓ Award-winning courses designed with speech and language therapists
- ✓ Learn a skill together
- ✓ Make new friends

Scan to join us in Littlemore on Mondays!
oxford@singandsign.co.uk



Saturday 7th October
2.30-4.30 pm

**AFTERNOON
TEA**
at the village hall



Railway Lane, Littlemore

tea, cake, and conversation,
& an opportunity to meet some of
your parish councillors

organised by the Trustees of the Village Hall:
to join them, or to help, please contact
c.drinkwater 760 @ btinternet.com

Saturday 4th November
2.30-4.30 pm

**AFTERNOON
TEA**
& CHRISTMAS FAIR
AT THE VILLAGE HALL
RAILWAY LANE



Christmas tea,
coffee, cake,
conversation ...

& an opportunity to do
some Christmas shopping!

organised by Littlemore Village Hall Committee
to join, or to help, please contact
c.drinkwater 760 @ btinternet.com

HEALTH CHECKS

If you are aged 40-74 years and live in Oxfordshire, you could be eligible for a FREE NHS Health Check with Health Checks Oxfordshire.

It's a new service to assist GP practices in catching up with Health Checks that were missed during the pandemic.

The health check takes 30-45 minutes to complete and will give you a snapshot of what is going on inside your body to help you tackle health problems before they become a concern. By assessing the risk factors, the check aims to reduce your risk of developing heart disease, stroke, type 2 diabetes, kidney disease, and certain types of dementia.

We work with a number of local partners to ensure that you have access to the support you need following your health check. Depending on your results, you'll be receive advice on how to lower your risk with lifestyle changes.

Whether you need help to quit smoking, lose some weight or cut down on your alcohol intake, we'll signpost you to free and local services that can help you achieve these goals.

Book Your Free NHS Health Check

Please call 0800 122 3790 or scan the QR code.



UKCF ACADEMY Holiday Stunt Camps

Book online for our
Christmas Camp in Stunts, Acrobatics,
Aerial, Trampoline & Parkour
Camp dates: 18-21 December 2023

<http://www.ukcfacademy.co.uk>



UKCF Academy
Oxford's First Parkour Park
at The Oxford Academy, Littlemore

Freestyle Trampoline Walls | Parkour | Acrobatics | Aerial Classes
Oliver Ward / Director



I'm sorry but there isn't space for all the posters that I've been sent this time: the electronic version has to be compressed to less than 10MB so that it will go through everyone's email systems, and some of the posters make this a great challenge. *Editor*



OTHER USEFUL CONTACT INFORMATION

ROSE HILL ADVICE CENTRE

We serve Rose Hill, Donnington & Littlemore, and offer fr advice in confidence to all local residents looking for help sorting out benefits, debt, and housing issues. Should the need arise, we will represent you in Courts of Law (for debt, rent arrears, eviction or mortgage repossession).

Find us: in the Rose Hill Community Centre, Carole's Way, off Ashhurst Way, Rose Hill, OX4 4HF

Drop in sessions at RH:

Monday 9:30am-12:30pm | Tuesday 2pm-4pm | Wednesday 9:30am-12:30pm | Thursday 2pm-4pm

Appointment only sessions at RH:

Mon 2-4pm | Tues 9:30am-12:30pm | Thurs 9:30am-12:30pm

Fortnightly Drop in or Book Sessions in Littlemore:

Thursdays 10-11.30am in St M & St N Church vestry.

For dates and to pre-book call 01865 438 634

You can also find us:

*online at rhdadvice.org

*email: admin@rhdadvice.org

*freephone 0800 170 0156 or 01865 438 634

Monday to Thursday from 9.30am to 4.00pm.

Sarah Meziu, Manager



THE COMMUNITY EMERGENCY FOODBANK

www.cefoxford.co.uk

If your household is facing a shortage of essential, non-perishable food, you can ask to be referred to us:

please contact your doctor, one of the advice agencies, a community or housing worker, your children's school, a church minister, counsellor, or other professional person to refer you.

Following referral you will be able to collect your food parcel: its size will depend on your circumstances & household size.

You may pick up your parcel within 2 weeks of your referral.

Please bring identification for yourself & anyone you are collecting for.

- Monday & Wednesday 12 noon to 2 pm: Barton Neighbourhood Centre: Underhill Circus, OX3 9LS
- Tuesday & Friday 12 noon to 2 pm: St Francis Church, Hollow Way; Headington, OX3 7JF
- Thursday 10 am to 11:30 am: Littlemore Baptist Church: Edith Kempson House, Chapel Lane, Littlemore, OX4 4QB

If you would like to consider helping CEF as a volunteer please phone me: 01865 514374 or 07799 532177 or email

enquiries@cefoxford.co.uk

Andrew Bevan



GENERAL PRACTICES

There are no Primary Medical or Dental services in Littlemore: the following GP surgeries cover Littlemore area:

Donnington Medical Partnership: 01865 771 313

1 Henley Ave, OX4 4DH

Cowley Road Medical Practice: 01865 791 850

Manzil Way, Cowley, OX4 1XD

Hollow Way Medical Centre: 01865 777 495

18 Ivy Close, Cowley, OX4 2NB

The Leys Health Centre: 01865 778 244

Dunnock Way, OX4 7EX

St Bartholomew's Medical Centre: 01865 242 334

Manzil Way, Cowley Rd, Cowley, OX4 1XB

Temple Cowley Health Centre: 01865 777 024

Temple Rd, Cowley, OX4 2HL



OUR LOCAL MP: Anneliese Dodds

• Address: Unit A Bishops Mews, Transport Way, OX4 6H House of Commons, London, SW1A 0AA.

• Email: anneliese.dodds.casework@parliament.uk

• Telephone: 01865 595 790 (9am to 5pm Monday, Tuesday, Thursday & Friday).



NEIGHBOURHOOD POLICE

www.thamesvalleyaert.co.uk

Rose Hill Community Centre, Carole's Way, OX4 4HF

Contact the team:

- Ring 101 for non emergency calls, or 999 for emergencies
- email RosehillTeam@thamesvalley.police.uk

Follow us on:

- Twitter – [TVP Oxford](#) or Facebook – [Thames Valley Police](#)



COMMUNITY WATCH

• **To report needles, sharps, offensive graffiti**, or graffiti on public buildings, council properties and in parks, cemeteries and bus shelters: report online at https://www.oxford.gov.uk/info/20095/do_it_online or telephone Oxford Direct Services on 01856 249 811 (they'll give advice about graffiti on private property, too).

• **To report Dog Fouling, Noise, Fly Tipping etc:** contact the Community Response Team, Oxford City Council: email saferoxford@oxford.gov.uk, or phone 01865 252 969. Or: Dog fouling and Fly tipping : <https://www.fixmystreet.com>

Noise: www.oxford.gov.uk/info/20058/noise_pollution/145/report_a_noise_problem (there's no out of hours service now).

• **To report a lost, or a stray dog:** contact the Dog Warden service at the City Council: 01865 249 811 or ecitizen.oxford.gov.uk/citizenportal/form.aspx?form=Report_Stray_Dog

• **To report Anti-Social Behaviour**, contact the police on 101 (999 if it's an emergency) or the Anti-Social Behaviour Investigation Team, Ox City Council: saferoxford@oxford.gov.uk or telephone 01865 252 969.

• **To report Illegal parking** email parking@oxfordshire.gov.uk, or go to <https://service.oxfordshire.gov.uk/reportparkedvehicle>.

If a road or pavement is obstructed, call the police on 101.

• **If you don't know who to call to report things that need fixing**, cleaning or clearing, like potholes, noisy manhole covers, or out of phase street lights, go to FixMyStreet: www.fixmystreet.com

• **Neighbourhood Watch Groups:** To join your local NW group, or form a new one, see www.ourwatch.org.uk

LITTLEMORE SCHOOLS

Emmanuel Christian School: www.ecschool.co.uk,

email: admin@ecschool.org.uk

John Henry Newman Academy: www.jhnacademy.co.uk

Mabel Prichard Secondary School: www.mabelprichard.org

The Oxford Academy: www.theoxfordacademy.org.uk

St John Fisher Catholic Primary School:

www.st-john-fisher.oxon.sch.uk

LOCAL PHARMACIES

Rose Hill: **The Leys Pharmacy:** 6a Courtland Rd, OX4 4HZ: 01865 777836: (offers emergency contraception)

Cowley Centre: **Superdrug Pharmacy:** Templars Square, OX4 3UZ: 01865 779 299

Late Night: **Boots:** Oxford Retail Park, OX4 6XJ: 01865 717699: open 'til midnight M-F, and 'til 10pm Saturday: (offers emergency contraception)

LITTLEMORE PARISH COUNCIL

2023-4 Council Chair: Cllr Maggie Willis Vice Chair: Cllr Dorian Hancock

MEMBERS and their preferred contact details

Cllr Susie Aldridge: susie.aldridge@littlemoreparishcouncil.gov.uk

Cllr Alison Cadle: alison.cadle@littlemoreparishcouncil.gov.uk

Cllr Tiago Corais: cllrcorais@oxford.gov.uk

Cllr Lynne Davies: lynne.davies@littlemoreparishcouncil.gov.uk

Cllr Michael Evans: michael.evans@littlemoreparishcouncil.gov.uk, 0771 3842877

Cllr Peter George: peter.george@littlemoreparishcouncil.gov.uk

Cllr Dorian Hancock: dorian.hancock@littlemoreparishcouncil.gov.uk

Cllr Joyce Milligan: joyce.milligan@littlemoreparishcouncil.gov.uk

Cllr Sadiea Mustafa-Awan: s.m.awan@littlemoreparishcouncil.gov.uk

Cllr Janice Pullen: jan.pullen@littlemoreparishcouncil.gov.uk

Cllr Anna Railton: anna.railton@littlemoreparishcouncil.gov.uk

Cllr Gabriele Santi: gabriele.santi@littlemoreparishcouncil.gov.uk

Cllr Chris Smowton: chris.smowton@littlemoreparishcouncil.gov.uk

Cllr Anne Stares: anne.stares@littlemoreparishcouncil.gov.uk

Cllr Sue Stewart: sue.stewart@littlemoreparishcouncil.gov.uk, 01865 711 332

Cllr Maggie Willis: maggie.willis@littlemoreparishcouncil.gov.uk

*There are 16 seats: the seats are distributed: Littlemore ward (13 seats), Bodley Road ward (2 seats), Sandy Lane West ward (1 seat).
Cllrs Cadle and Santi represent Bodley ward Cllr Evans represents Sandy Lane West ward All others represent Littlemore ward*

COMMITTEES

Finance & General Purposes Committee

Chair: Dorian Hancock

Members

Susie Aldridge (G)

Peter George

Sadiea Mustafa-Awan (G)

Maggie Willis (G)

G = Grants Subcommittee

Personnel Committee

Chair: Joyce Milligan

Members

Susie Aldridge

Alison Cadle

Dorian Hancock

Sadiea Mustafa-Awan

Maggie Willis

Planning Committee

Chair: Sue Stewart

Members

Lynne Davies

Jan Pullen

Chris Smowton

Maggie Willis

WORKING GROUPS

Membership of all working groups is open to the public; please contact the working group chair to express your interest.

KEY: (L) = Lead (P) = public member, who is not a parish councillor.

C'munity Engagement, Climate & Biodiversity

Tiago Corais
Judith Godsland (P)
Jan Pullen (L)
Anna Railton
Gabriele Santi
Sue Stewart
Chris Smowton
Maggie Willis

Estates & Maintenance

Susie Aldridge
Alison Cadle
Lynne Davies
Joyce Milligan
Sadiea Mustafa-Awan
Anne Stares
Maggie Willis (L)

IT

Alison Cadle
Peter George (L)
Anna Railton
Chris Smowton

Neighbourhood Plan

Lynne Davies
Laura Davis (P)
Tony Eade (L) (P)
Frank Gargent (P)
Peter George
Ruth McNamara (P)
Jan Pullen
Anna Railton
Chris Smowton
Maggie Willis

Transport & Connectivity

Tiago Corais
Lynne Davies
Michael Evans
Dorian Hancock (L)
Sadiea Mustafa-Awan
Erdem Pulcu (P)
Anne Stares
Maggie Willis

Policies

Alison Cadle (L)
Dorian Hancock
Sadiea Mustafa-Awan
Chris Smowton
Maggie Willis

OTHER PROJECT GROUPS

Herschel Crescent Recreation Field Development Project: Jan Pullen, Sue Stewart, and Maggie Willis

Emergency Plan: Alison Cadle, Lynne Davies, Jan Pullen, and Anne Stares

Iffley Charities Representatives: Susie Aldridge and Dorian Hancock

Littlemore Community Association Representatives: Michael Evans, Dorian Hancock, and Sadiea Mustafa-Awan.

Littlemore Partners & Communities Meeting Representatives: Jan Pullen and Anne Stares.

CONTACT DETAILS FOR FULL COUNCIL

Clerk: Morgan James: clerk@littlemoreparishcouncil.gov.uk. Telephone: 07377 682 216.

Write to the Parish Council: c/o Sandford Lodge, 24 Lawn Upton Close, Littlemore, Oxford, OX4 4QF.

Responsible Financial Officer: Geoffrey Ferres

FULL COUNCIL MEETINGS

Full Council Meetings are held at Littlemore Village Hall, Railway Lane, OX4 4PY,
from 7-9pm on the 2nd Tuesday each month except August.

Members of the public are welcome to attend. For news about the meetings, and for minutes of meetings,
please check the Parish Council website: www.littlemoreparishcouncil.gov.uk.



SUMMER SCHOOL AT THE OXFORD ACADEMY

Oxford Summer School of Art, Craft and Music was started in 1991 by the late Richard Speed, whose vision was to put anyone interested in arts & crafts in touch with teachers & specialists, chosen for their creative flair and for their ability to communicate their enthusiasm & skills with good humour. Over the years several schools have been used as venues, and for the last few it's been back in Littlemore, now at The Oxford Academy. It's still run as a non-profit-making venture, now by Anne Griffiths. If you'd like to be on the mailing list, or to help next summer, with set up, general running around, or manning the Tutors' Shop, please contact her.

Contact Anne: info@annegriffiths.com

Website: <https://oxfordsummerschool.com>

You've just missed this year, but to tempt you for next year here's the sort of thing that you can do:

RECENT COURSES AT ART CRAFT & MUSIC SUMMER SCHOOL

- *A Holiday in Watercolour* with Robin Mason
- *A Little Book of Fabrics* with Caroline Marriott
- *Abstract Sea* with Amanda Hislop
- *Artist's Books, Zines and Instant Books* with Penny Maltby
- *Batik Birds* with Jenny O'Leary
- *Batik inspired by John Piper* with Jenny O'Leary
- *Boro Inspired Patchwork* with Christine Green
- *Botanical Illustration* with Valerie Price
- *Breton Style Basket* with Richard Kerwood
- *Building up the surface - Creating a concertina sketchbook* with Polly Woolstone
- *Cyanotype and Phytogram Printing* with John A. Blythe (pictured bottom R)
- *Drawing and Painting for the Terrified & Petrified* with Richard Box
- *From Truth to Abstraction in Mixed Media* with Jane Strother
- *Garden with Paint Print and Stitch* with Angie Hughes
- *Gel Plate Monoprinting* with Asma Hashmi
- *Glorious Felted Hats* with Sue Pearl
- *Indigo* with Anne Griffiths
- *Introduction to Screenprinting* with Liam Biswell
- *Introduction to Straw Work* with Penny Maltby
- *Kawandi Quilting* with Christine Green (pictured top R)
- *Landscapes and Seascapes in Oils* with Kevin Scully
- *Life Drawing* with Cathy Landell Mills (pictured second R)
- *Make a Teapot or Two* with Debbie Page
- *Making Pictures in Free Motion Machine Embroidery* with Linda Miller
- *Mixed Media Images* with Jo Dixon
- *Moon Jars* with Debbie Page (pictured third R)
- *Out of India* with Polly Woolstone
- *Paint like a wild Beast!* with Richard Box
- *Paper Cutting* with Christine Green
- *Portraits - Colour and Tone* with Cathy Landell Mills
- *Portraits - Line and Form* with Cathy Landell Mills
- *Screenprinting and Collage* with Liam Biswell
- *Simple Folded Sketchbooks* with Amanda Hislop
- *Singalong a Showstopper* with Jenni Matthews
- *Stained Glass – Colour and Light* with Nicola Kantorowicz
- *Sustainable Camera-less Photography* with John A. Blythe
- *Table Top Jewellery Making* with Sara Withers
- *Willow Garden Decorations* with Richard Kerwood
- *Felted Woodland Creatures* with Sue Pearl



PLANNING MATTERS

NB: most applications are now decided within 6 weeks so I'm unable to give LM residents adequate notice of everything they might wish to comment on.

As is usual, there are a lot of new planning applications that will affect immediate neighbours: I haven't space to list them all: if you wish to keep fully abreast, log into the [Oxford Planning Portal](#) and click [view or comment on an application](#). You can then do a [weekly or monthly search](#) of new applications, and/or new decisions in the neighbouring parishes, of Littlemore, or simply of your own ward in Littlemore. If you know what you are looking for, you can just put in the reference number.

• **Permission for trees to be felled in the conservation area:**

- two dangerous trees in the Village Hall car park (Sycamore & Ash) will be felled in early October, and there will be other works to trees in the garden See: 23/01491/CAT
- a Lime tree will be felled at Newman Lodge 23 Lawn Upton Close (a sycamore will also be pruned). See: 23/01833/CAT
- a Lawson Cypress behind the George will be felled: see: 23/01325/CAT

• **Variations to permitted developments:** this type of application is used to remove or make changes to conditions imposed on a previous planning permission.

Variations have recently been submitted for the following permitted developments. Each is a new housing estate:

- Northfield House Sandy Lane West: the development is now to be 100% Social Housing: see: 23/01973/VAR
- Land at the rear of George Pub Ref. No: 23/01792/VAR
- Dominion Oil Site, Railway Lane 21/01176/FUL (Approved)
I haven't followed every detail of these applications and can't offer clarification about what has changed at the George or in Railway Lane. NB at Railway Lane: several conditions refer to the impact on No 4 Railway Lane.

• **New documents about a condition:** have been submitted for the permitted development of a new estate at the site of the Former Workshop At Lanham Way: see: 21/03114/CND.

• **A new planning application that will affect the community:**

The owners of Acorn News in St Nicholas Rd have applied for planning permission to take over the adjacent shop (currently unused). Their hope is to provide an enlarged provisions store under the *Nisa Local* franchise, with a bakery, fresh meat, fruit & vegetables, a Costa Coffee machine/TTO, and an ATM. If permission is granted, they hope the premises will be open before the end of this year. They will also apply for a license to sell alcohol. The premises are owned by the City Council. See: 23/01750/FUL. I have previously asked Royal Mail if a new post box can be placed outside, but sadly, it's 'no' as there is one relatively nearby.

• **Golden Ball Pub: update:** their application for new externally illuminated signage, and other signs was approved: they are in black and white with a gold finish.

See application 23/00754/ADV .



PLAY AREAS IN LITTLEMORE

Littlemore Parish Council is committed to providing safe and stimulating play areas for the children of Littlemore in its Oxford Road and Herschel Crescent recreation grounds. Sadly, both existing play areas have suffered considerable damage in recent months.

The Parish Council has identified items of equipment needing repair at both sites and found suitable suppliers. The Parish Council has a duty to ensure that Littlemore residents and council-tax payers get value for money: working to obtain competitive quotes for repairs and new components takes time. Care will be taken to ensure that we pay a fair price for the work that is required.

Discussion is ongoing regarding the provision of additional play and fitness equipment, improving new sports facilities, and installing lighting, more trees and seating.

The Parish Council currently leases the Oxford Road Park on what is now a relatively short lease and is presently engaged in clarifying its position with the leaseholder before committing to what will amount to an extensive and costly investment of public money. The improvement plans can move ahead once our position has been clarified.

To help guide future developments, Littlemore Parish Council would welcome input from the public through the Community Engagement Working Group, and the Neighbourhood Plan Working Group. Please find contact details on the Parish Council website or on p 16 of this issue, or phone the Clerk during working hours on 07377 682 216.

Maggie Willis, Chair, Littlemore Parish Council, 14 Sept 2023

LITTLEMORE NEIGHBOURHOOD PLAN

Thank you to those who completed the recent survey. We had over 450 responses, which is very encouraging. We're collating them into a manageable format, and starting to analyse them, so that they (and data collected in earlier surveys) can provide the basis for draft policies.

We have had a good number of volunteers for the five policy groups. They will work between October and January to prepare the draft policies on: *the built environment, *the natural environment, *health & well-being, *transport & connectivity, and *community infrastructure & facilities. Residents will have opportunities to comment on the drafts at later stage. We will keep everyone informed through the Littlemore Local and in other ways.

If you wish to be involved, or wish to know more about the Neighbourhood Plan, please contact me, tony@edperspectives.org.uk or Jan Pullen, jan.pullen@littlemoreparishcouncil.gov.uk .

Tony Eaude

RENTED PROPERTY MUST BE LICENSED...

To protect tenants, rented property must be licensed by the City Council. After an introductory year at £480 a 5-year license now costs the landlord £1,100.

If a rented property isn't licensed with them, the City Council can issue financial penalties to landlords of up to £30,000. The courts have the power to impose unlimited fines.

Advice to tenants: you are entitled to rent rebates if you live in unlicensed rented property. To see if your home is licensed, go to www.oxford.gov.uk then to the *register of selective licences* or the *register for shared housing*. If you can't find your home listed, maybe it's just because the list isn't quite up to date, but please contact propertylicensing@oxford.gov.uk .